

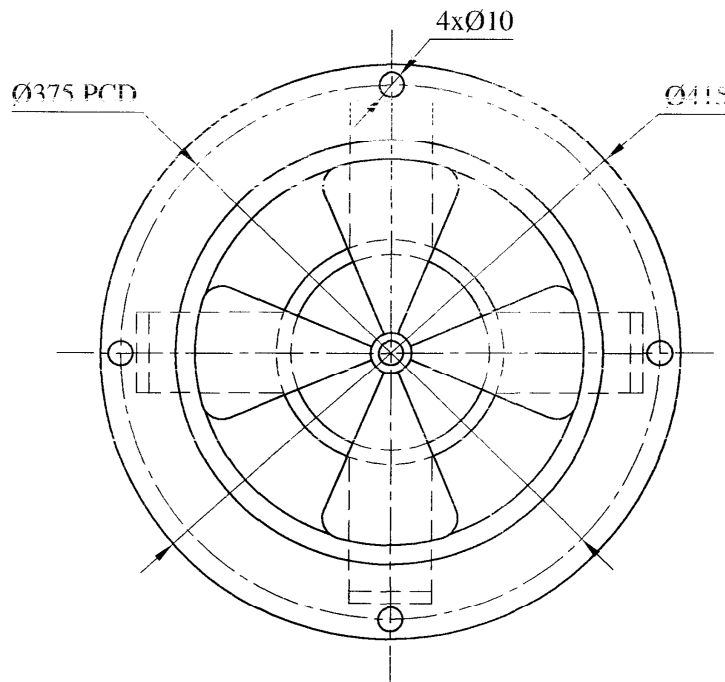
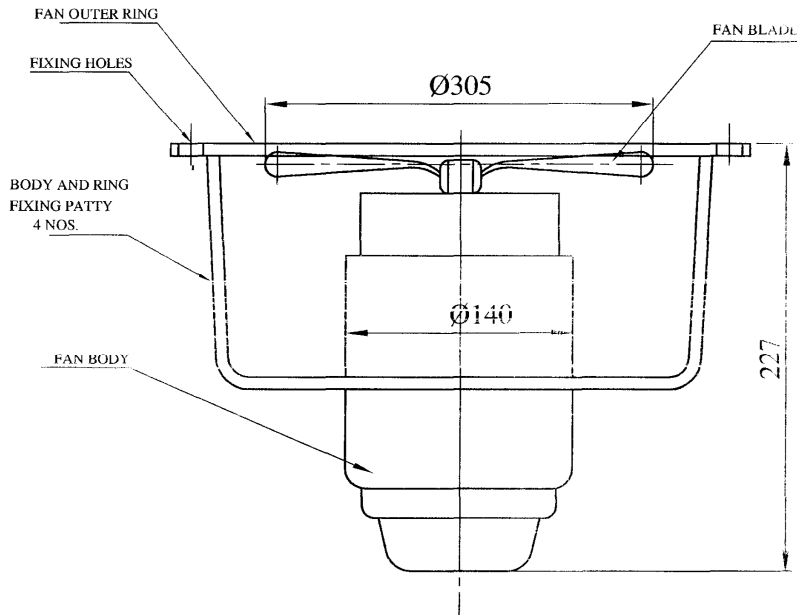
5

4

3

2

1



MACHINING DEVIATIONS FOR LINEAR DIMENSIONS	RANGE	0 - 6	6 - 30	30 - 120	120 - 315	315-1000	1000-2000	2000-4000	ABOVE 4000
	TOLERANCE	$\pm 0.1$	$\pm 0.2$	$\pm 0.3$	$\pm 0.5$	$\pm 0.8$	$\pm 1.2$	$\pm 2$	$\pm 3$
FOR DIMENSIONAL TOLERANCES OF SHEET METAL PARTS AND WELDED STRUCTURES, REFER STD. RD-227									
UNSPECIFIED TOLERANCE FOR LINEAR AND ANGULAR DIMENSIONS REF. IS 2102 (PT-1) (MEDIUM)									
VALUES OF SURFACE TEXTURE SHALL BE AS PER COMPANY STD DS. 1012.C.									
QUALITY OF WELD JOINTS REF. ISO 5817									
PROTO / PILOT / PRODUCTION									

#### TECHINICAL SPECIFICATION - EXHAUST FAN

1. SIZE : 300 mm SWEEP
2. NOMINAL VOLTAGE : 110 V. DC
3. CONSTRUCTION : METAL BLADE TYPE WITH MS RING  
GENERALLY AS PER ICF DRG. WCB 7-3-101 ALT 'B' COL - II
4. FAN ASSY. SHALL BE POWDER COATED IN SILVER ASH FINISH
5. FAN SHALL GENERALLY CONFORM TO IS: 6680 WITH 'H' OF REV- DEC.2005
6. FIRM SHALL PROVIDE ROUTINE TEST CERTIFICATES
7. DIMENSIONS GIVEN ARE APPROXIMATE & ALL OTHER SPEC. DIMN. ARE MANUFACTURERS STANDARD PRACTICE

UN CONTROLLED COPY

SL No.	QTY	DRG. / STOCK No.	DESCRIPTION	SIZE	COMPANY STD/IS STD	WL.
		DETAIL PARTS			MATERIAL	
		PRODUCT			8 W OHE CAR (IR)	
					SURFACE TREATMENT	
					APPROVED	30/11/10
					CHECKED	30/11/10
					DRAWN	Jaishankar
					REF DRG	
		4	927 - 21201	927	SCALE	
ALT	CHANGES / ECN No.	DATE	BY	CKD	APP	QTY
		NEXT ASSY			MODEL	
		TITLE			DRG No.	
		EXHAUST FAN			927 - 21155	
		(110 V. DC)				



BEML LIMITED  
R&D, BANGALORE COMPLEX  
BANGALORE 560 075

TITLE

EXHAUST FAN  
(110 V. DC)

DRG No.

927 - 21155

ALT

